



Newsletter

<http://www.midwestwoodworkers.org>

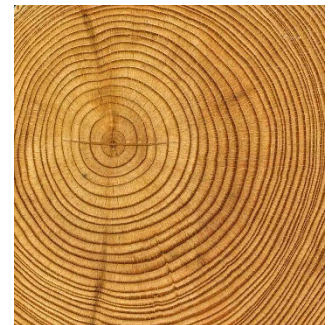
May 2022

President's Letter

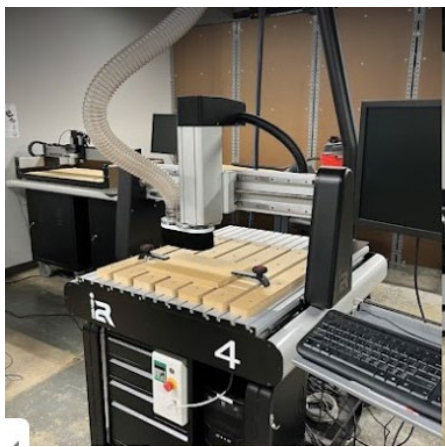
May 2022 Newsletter –

I want to start this month's newsletter by thanking Darren Laupp for his very informative presentation on his process of making intarsia, which are truly works of art. As a bonus he also talked us through his thought process on designing and completing his workshop/art gallery. In the end, it is a perfect shop for what he does, which is to create art from small pieces of wood. I also want to thank Darren's wife for the wonderful baked goods for the meeting. They were as awesome as the presentation.

Our presentation for the month of May, at Sawdust Studios, will be Joe Marschall, a Senior Research Associate from the University of Missouri's School of Natural Resources, on dendrochronology (tree-ring dating) and how it can be used to determine climate change through the centuries. Joe is also involved in research of prescribed burning and its effect on the health of the forest. Joe will be providing us with a slide presentation on his work along with some samples for us to look at. A big thank you to Joe for taking the time to present to MWA on Monday.



During our last meeting we discussed if there would be a subgroup of MWA members interested in helping to build several student desks for *Mobility Worldwide* for shipment to Nicaragua. During last meeting I showed the sample that they provided to me when I toured the Mobility Worldwide facility that I will bring again on Monday. There seemed to be some interest in taking on this project, but I really need someone to step up and take this on as a project for the membership. This will be on the business agenda for Monday and we can decide if this is something MWA can take on or if I need to let Gary Moreau, of Mobility Worldwide, that we will have to pass.



Next month's meeting will be on Tuesday, June 28th, at Moberly Area Community College's Community Makerspace, located at 601 Business Loop 70W, in the old Parkade Plaza facility. This should be an interesting tour of their facilities

and a presentation on how to utilize the opportunities they offer to the community. The MACC Makerspace contains equipment to do everything from woodworking to metal fabrication, along with several pieces of digitally controlled machines.

The MACC website states, *“This is a state-of-the-art collaborative space that brings innovative top of the line equipment and tools to a community workspace with creative entrepreneurs in mind. The unique space allows for makers and doers of many ages and skillsets to develop and improve their trade. Not restricted to students, this space is for the community at large and will offer monthly and annual memberships as well as day passes.”*

I have finally completed my very large wardrobe project, after way too many delays, and hope to install it over the next couple of weeks. The benefit of such a large project is that it taught me to break this type of building project into specific sub-assemblies and to just concentrate on each of them individually. But it also reiterated what I already knew, and that’s I hate handling large sheet goods. My shop is just not set up for dealing with maneuvering these large sheets of plywood and MDF around the shop and it seems they get heavier and heavier every time I have to move them.

As always, bring your show and tell projects, and I look forward to seeing everyone on Monday.

Kindest regards,

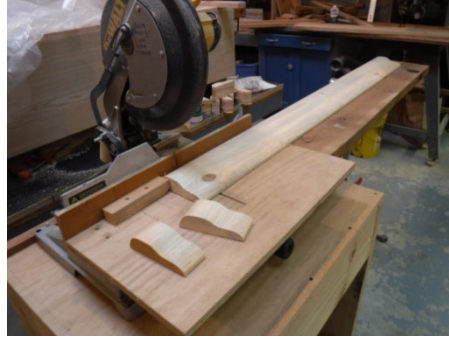


Dean Gregory,
President, Midwest Woodworkers Association

MWA Christmas Toy Project

The Midwest Woodworkers’ Association has for many years provided handmade wooden toys to various children’s service organizations such as day care centers, nursery schools, and hospitals. In order to raise funds to purchase wooden wheels and axle pegs, the club has had a booth at the Hartsburg Pumpkin Festival where children are given the opportunity to assemble their own car in exchange for a donation. Members are asked to make the car bodies and the club provides the paint, wheels and axle pegs.

Drawings for a variety of car body ideas are available on the club website (<http://www.midwestwoodworkers.org>) and can be cut from scrap 2x construction lumber (anything looks like a car if you put wheels on it). As an alternative, the club sends 2x4’s and 2x6’s to a mill shop where the lumber is cut into the profile of a car body. The lumber can then be easily cut into sections 2 inches long. Car stock can be obtained from Terry Selby.



Some boards are checked (the grain is running the wrong way) and occasionally there is some waste. However, many car bodies can be salvaged with a bit of wood glue and a couple of rubber bands.



After the car bodies are cut, holes need to be drilled for the axle pegs. The pegs are $\frac{1}{4}$ " in diameter and the holes need to be sized to provide a tight (but not too tight) friction fit. Depending upon your drill bit collection, there are some options:

Drill Size	Decimal
7/32"	0.2188"
#2	0.2210"
#1	0.2280"
A	0.2340"
15/64"	0.2344"
6 mm	0.2362
B	0.2380

Please do not use a $\frac{1}{4}$ " bit.

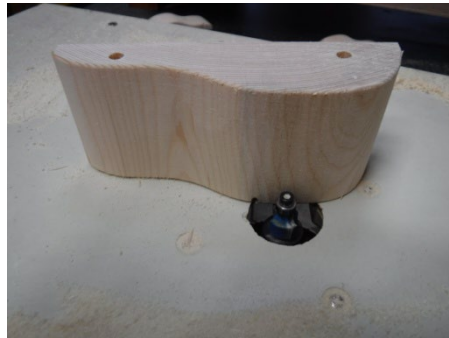
Holes should be located about 1" from the front and back of the car body and about $\frac{5}{16}$ " above the bottom. If the holes are too high, the wheels won't touch the ground.



Unfortunately, after the axle holes are drilled, the car body needs to be sanded, especially the sides since they are end grain. Sanding with 80 or 100 grit paper is usually sufficient since the bodies will be painted.



After sanding the sharp edges are softened with a small (1/8" or 1/4") roundover bit or small chamfer bit.



Some knots and other defects can be repaired with a suitable wood filler.



Car bodies are then ready to paint. Club members usually meet once a month to paint cars, wheels and axle pegs. Location for painting will be announced at a club meeting or by email.



After the car bodies are painted, they are taken to the Pumpkin Festival for children to attach the wheels. We usually need between 1,000 and 1,500 car bodies, depending on the size of the crowd at the festival. Wheels are attached to the remaining car bodies by MWA members and finished cars are distributed to deserving children in time for Christmas.



Woodworking Resources

Cardwell Lumber

5927 Business 50 West
Jefferson City, MO 65109
573-893-2836
retailsales@cardwelllumber.com
<http://cardwellhardwoods.com/>
Monday-Friday: 7:00 AM-5:00 PM
Saturday: 8:00 AM-12 noon
Domestic and exotic hardwoods, sheet goods, power
and hand tools, woodworking supplies

Taylor Toolworks

<https://www.taytools.com>
610 Big Bear Blvd., Suite 431
Columbia, MO 65202-3737
573-397-6432

Midwest Woodworkers' Association

c/o Bob Youngquist

4435 Highway PP

Columbia, MO 65202

youngquistr@missouri.edu

Dungarees

10% off orders under \$200

15% off orders over \$200

Free shipping on orders over \$55

Discount code: MWAMMWT used in the last
page of checkout

<https://dungarees.com>

Hahn Custom Laser Engraving, LLC

573-489-8732

<https://www.facebook.com/HahnCustomLaserEngravingLLC/>